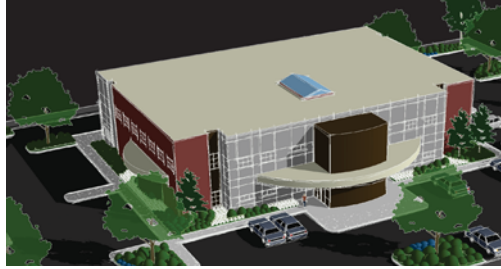


**Health Care and  
 Public Welfare  
 Projects**



- Hospice of Spokane, Spokane, WA
- St. Anne's Children and Family Center, Spokane, WA
- Spokane Urban Ministries, Walnut Corners, Spokane, WA
- Catholic Charities Family Services Center (LEED Certification Pending), Spokane, WA
- Spokane Tribe Emergency Services Facility, Wellpinit, WA
- Family Resource Center, Davenport, WA
- Pioneer Center Parking Improvements, Spokane, WA
- Enzler Dental Office, Spokane, WA
- Spokane Veterans Administration Medical Center Storm Water Management Improvements, Spokane, WA
- Spokane Veterans Administration Medical Center Independence Avenue, Spokane, WA
- Sacred Heart Medical Center Parking Improvements, Spokane, WA
- Mayfair Medical Office Building, Spokane, WA
- Inland Imaging Parking Improvements, Spokane, WA
- East Central Community Organization Housing, Spokane, WA
- Wenatchee Valley Medical Center Confluence Health Center, Wenatchee, WA
- St. Joseph Family Center, Spokane, WA
- Spokane County Fire District 9, Station 94, Construction Staking, Spokane County, WA
- Thompson's Custom Orthotics & Prosthetics, Spokane, WA
- Cancer Care Northwest, Deaconess Atrium Landscaping, Spokane, WA
- Benewah Medical / Wellness Center Master Plan, Plummer, ID